

State of Wyoming Corner Record

(In compliance with the CORNER PERPETUATION AND FILING ACT, Wyoming Statutes, 1997, Section 33-29-140, et. seq. and the Rules and Regulations of the Board of Registration for Professional Engineers and Professional Land Surveyors)

Reverse side of this form may be used if more space is needed.

Record of original survey and citation of source of historical information (if corner is lost or obliterated). Description of corner monumentation evidence found and/or monument and accessories established to perpetuate the location of this corner. Sketch of relative location of monument, accessories, and reference points with course and distance to adjacent corner(s) (if determined in this survey). Method and rationale for reestablishment of lost or obliterated corner.

FOUND: FOUND 120 SPIKE AS SHOWN.

G.L.O. RECORD: JOHN B. THOMAS, DEPUTY SURVEYOR, JUNE 1871
80.00 CHAINS, SET A GRANITE BOULDER 17x7x6 FOR CORNER
TO SECTIONS 15,16,21,22.

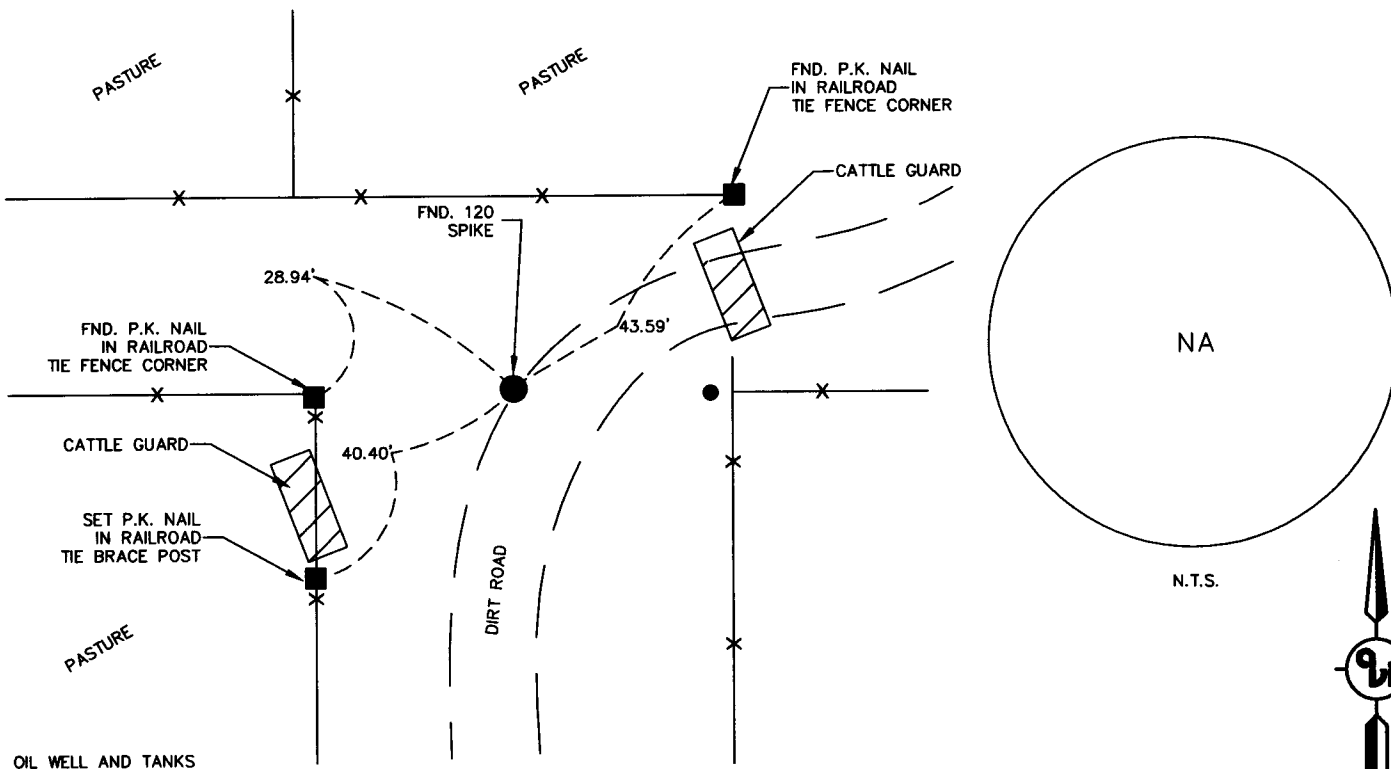
SET: NOTHING



RECP #: 660725

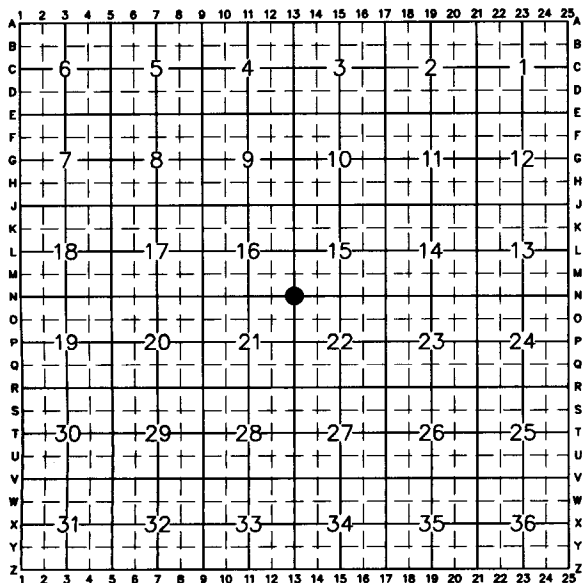
RECORDED 5/8/2015 AT 1:24 PM BK# 2443 PG# 1161
Debra K. Lathrop, CLERK OF LARAMIE COUNTY, WY PAGE 1 OF 1

REFERENCES: FOUND AS SHOWN



Date of Field Work: JULY 2013 Office Reference: 2-3516.13

CROSS INDEX DIAGRAM



Firm/Agency, Address

Adam E. Deschler

A.V.I., p.c.

1103 Old Town Lane, Ste.101

Cheyenne, WY 82009

Telephone Number: (307) 637-6017

This corner record was prepared by me or under my direction and supervision.

SEAL & SIGNATURE



Corner Name: SECTION CORNER Section: 1615 T 21 R 65 ; 6th P.M. Cross-Index No.: N-13
SBRPEPLS/PLSW: March 1994